

SETCCE

User Manual
SETCCE proXSign® component v2.0.6 for WIN OS

[New generation of SETCCE proXSign® component]



Document identification: N/A
Document version: 4
Document authors: Svetlana Šaljić, Helena Ostanek, Anja Rožac
Document status: Confidential
Document last change date: 16.11.2015

CONTENT AND COPYRIGHT

proXSign® is a product developed by **SETCCE**. Possession or distribution of proXSign product without a license is illegal. Please contact <mailto:info@setcce.si> or **+386 1 620 4 500** to obtain your license.

The content of this document is copyrighted entirely by SETCCE. No distribution or copying is allowed without permission of SETCCE. SETCCE, SETCCE logos and SETCCE product names are registered trademarks by SETCCE. Copying and usage of logos and product names are not allowed prior to SETCCE approval.

About SETCCE

SETCCE is the leading regional provider of specialized solutions and services for business process dematerialization. We have pioneered in local as well as in international markets with technologies that deliver trust in e-business and e-government services, and comply with the most demanding legislative requirements.

Working with industries such as telecom, finance, and the governmental sector, SETCCE delivers a range of products and services covering the fields of:

- Electronic invoicing
- Electronic archiving
- Electronic signing
- PKI and information security

Contacts

SETCCE d.o.o.
Tehnološki park 21
SI-1000 Ljubljana
Slovenia
Europe

Tel: +386 (1) 6204500
Fax: +386 (1) 6204509

E-mail: info@setcce.si
Web: www.setcce.si

INDEX

1. New generation of SETCCE proXSign® component	3
2. Supported environment.....	4
2.1. Supported environment	4
3. Prerequisites.....	5
3.1. Communication port.....	5
3.2. Import a personal digital certificate	5
3.3. »SETCCE services root CA« and »SETCCE proXSign intermediate CA« digital certificates	5
3.3.1. How to install »SETCCE services root CA« and »SETCCE proXSign intermediate CA« digital certificates	5
4. Installation and upgrade.....	8
4.1. Install SETCCE proXSign® component	8
4.1.1. Silent installation	9
4.1.1.1. Silent installation with autostart.....	9
4.1.1.2. Silent installation without running the component.....	9
4.1.2. Standard installation.....	9
4.2. Autoapdate of SETCCE proXSign® component	11
4.3. Check for updates	12
5. Quit and RESTART SETCCE proXSign® component.....	13
5.1. Start SETCCE proXSign® component.....	13
5.2. Autostart SETCCE proXSign® component	14
5.3. Quit (Stop) SETCCE proXSign® component	14
6. Removing SETCCE proXSign® component	16
7. Installing a digital certificate	17
7.1. Is your personal digital certificate installed on your computer?	17
7.2. Is your root certificate installed on your computer?.....	17

1. NEW GENERATION OF SETCCE PROXSIGN® COMPONENT

The SETCCE proXSign® components provide digital signing, encryption/decryption and time stamping of your documents.

The new generation of SETCCE proXSign® v 2.0.0 has been developed as a response to the limited plug-in support by the majority of browsers. SETCCE proXSign v 2.0.0 overcomes issues raised by the limited access to the certificate store and crypto functions in Firefox v 33 and higher, as well as issues related to limited plug-in access to the system functions in Google Chrome and Microsoft Edge.

SETCCE proXSign v 2.0.0 innovative concept provides solution, which is browser independent as it works in all popular browsers.

The new proXSign® component is installed as a desktop application which runs as a background process. Features like »Autoupdate«, »Autostart« and »Check for Updates« are configurable in the graphical user interface. You can also always check if component is running.

The advantages of the SETCCE proXSign v 2.0.0 are:







One component for all functionalities (signing of PDF and XML documents, timestamping)

- Support for all popular browsers,
- User can use different browsers and only one digital certificate store,
- Single installation for all browsers,
- Autoupgrade.

For assistance with installation or use of SETCCE proXSign v 2.0.0 please first contact the service provider (i.e. on-line banking, governmental services etc.), and then the SETCCE support.

2. SUPPORTED ENVIRONMENT

2.1. Supported environment

Operating system (OS)	Browser
Windows XP,7,8,8.1,10	 Internet Explorer v8 to v11  Edge v20
	 Mozilla Firefox from v30 to v42  Google Chrome v45 and v46  Opera v31  Safari v 5.1.7

Notes:

- For MAC OS X see SETCCE_proXSign_UserManual_MAC_ANG.docx.
- In the current version of ProXSign® package, LINUX OS is not supported yet.

3. PREREQUIREMENTS

3.1. Communication port

Browsers communicate with SETCCE proXSign® component over one of the following unused ports:

- 14972,
- 41472,
- 57214,
- 61427.

If you use **Internet Explorer v8, v9**, then one of the first two ports can be used (14972 or 41472).

In order to run SETCCE proXSign® component in your environment you have to ensure that one of the listed ports are unused.

3.2. Import a personal digital certificate

Your personal digital certificate has to be installed in Windows certificate store. See chapter 7.

3.3. »SETCCE services root CA« and »SETCCE proXSign intermediate CA« digital certificates

SETCCE proXSign® component provides a higher level of security to its user by encrypting the communication between the component and the browser.

Therefore two digital certificates issued by SETCCE d.o.o. has to be installed on your computer as a trustworthy certificate:

- **SETCCE services root CA** and
- **SETCCE proXSign intermediate CA**

3.3.1. How to install »SETCCE services root CA« and »SETCCE proXSign intermediate CA« digital certificates

Both digital certificates are automatically installed into Windows certificate store during the first setup of the SETCCE proXSign® component.

Both digital certificate are also automatically installed in the Mozilla Firefox certificate store, but when the SETCCE proXSign® component is started.

You can check thumbprints of »SETCCE services root CA« and »SETCCE proXSign intermediate CA« digital certificates in digital certificate details view. Thumbprint of »SETCCE services root CA« installed in your digital certificate store must match Thumbprint on Figure 1 and thumbprint of »SETCCE proXSign intermediate CA« must match Thumbprint on Figure 2.

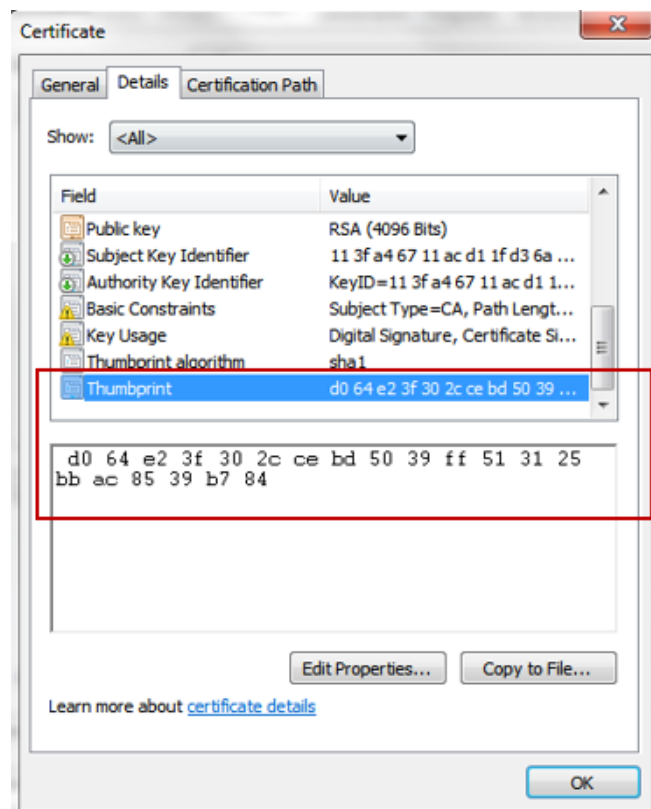


Figure 1: »SETCCE services root CA« digital certificate's thumbprint

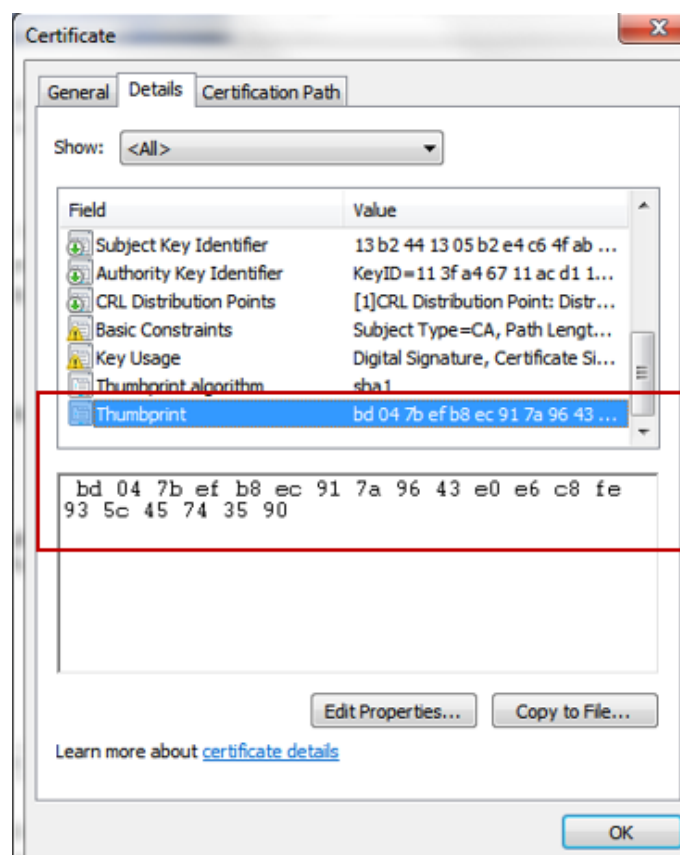


Figure 2: »SETCCE proXSign intermediate CA« digital certificate's thumbprint

Important:

1. If you want to install **Mozilla Firefox** browser on your computer, after the SETCCE proXSign® component has been already installed and running, **you have to restart the component**. The restart of SETCCE proXSign® component **installs** both SETCCE certificates into Firefox certificate store. To refresh digital certificates data in the **Mozilla Firefox** browser, you must restart browser.

See chapter 5.1 for restart.

2. If you **install and run the component over Mozilla Firefox browser**, you have to **restart the browser** after successful installation.

4. INSTALLATION AND UPGRADE

SETCCE proXSign® component is installed as a desktop application which runs as a background process.

The features like »Autoupdate«, »Autostart« and »Check for Updates« are configurable in SETCCE proXSign® graphical user interface. You can also check if the SETCCE proXSign® component is running.

4.1. Install SETCCE proXSign® component

The executable program is called SETCCE_proXSign_setup.exe and it is signed with SETCCE digital certificate, issued by CA Thawte.

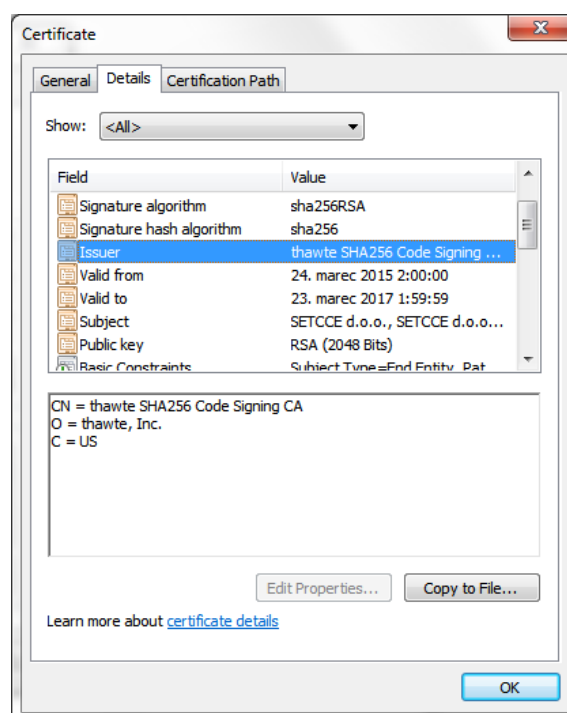


Figure 3: SETCCE digital certificate used for signing proXSign® setup

SETCCE proXSign® component could be installed in two ways:

- Silent installation
- Standard installation

Both installation procedures demands administration privileges.

Important:

Before you start with setup procedure, make shore that proXSign® component doesn't run on your computer (under any user on your computer). See chapter 5.3 for stopping the proXSign® component.

4.1.1. Silent installation

Silent installation can be run in two modes:

1. Silent installation with autostart of the component
2. Silent installation without running the component

4.1.1.1. Silent installation with autostart

Run the SETCCE proXSign® component in command prompt with the next command:

```
SETCCE_proXSign_setup.exe /silent
```

Component will be installed in silent mode. After successful installation the component will start automatically.

4.1.1.2. Silent installation without running the component

Run the SETCCE proXSign® component in command prompt with the next command:

```
SETCCE_proXSign_setup.exe /silent /norun
```

Component will be installed in silent mode but it won't be started at the end.

4.1.2. Standard installation

Installation steps:

1. Log in to your user account as administrator.
2. Download, save and unpack the distribution package.
3. Double click on SETCCE_proXSign_setup.exe.
4. For the security reasons, check the Security Warning dialog window (Figure 4). If the component is proXSign® and the publisher is SETCCE d.o.o., then click »**Yes**«.

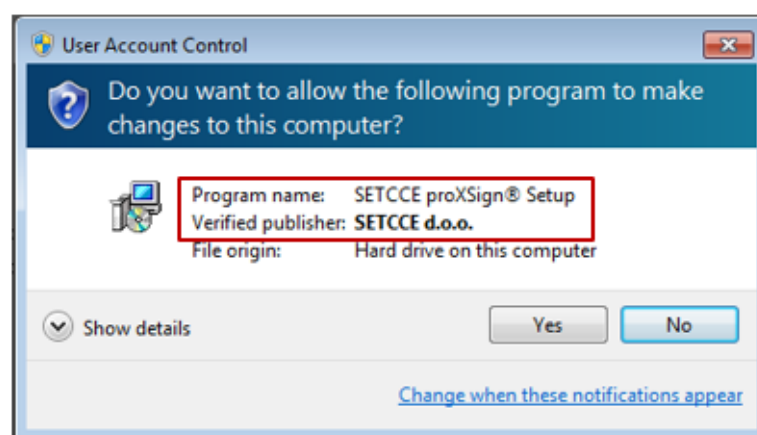


Figure 4: Security warning dialog window

5. Then follow the setup instructions.

During the installation process, you can choose between **two additional options**:

1. Create a desktop icon (Figure 5).

2. Launch proXSign (Figure 6).

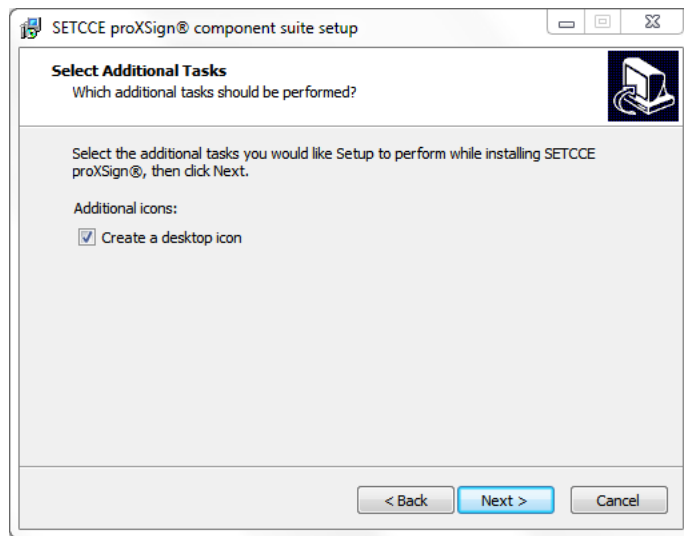


Figure 5: Option »Create a desktop icon«

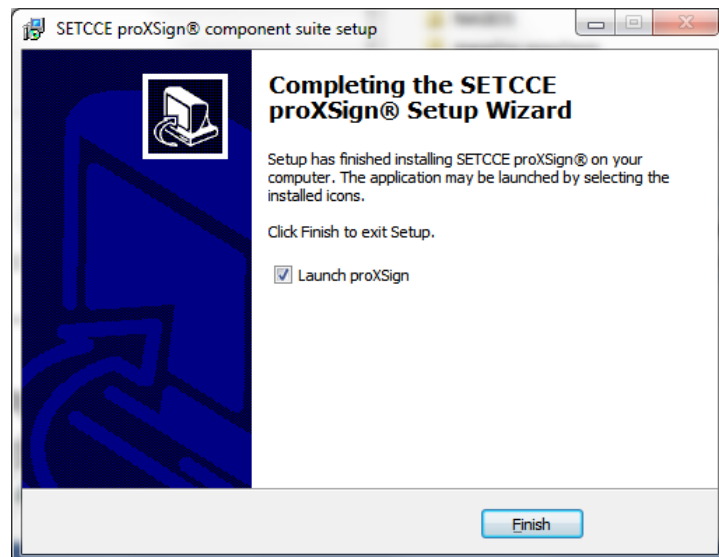


Figure 6: Option »Launch proXSign«

By choosing an option »Launch proXSign«, the component is launched as soon as installation process is finished.

Important:

1. The first time you log-in as a standard user after proXSign® component has been installed on your computer, you have to run the component, since it is not started automatically. See chapter 5.1.
2. The SETCCE proXSign® component uses two digital certificates; »**SETCCE services root CA**« and »**SETCCE proXSign intermediate CA**«. See chapter 3.3.

4.2. Autoapdate of SETCCE proXSign® component

The component can be updated on request or automatically (if new release is available).

Both update procedures demands administration privileges.

Configure »Autoupdate«:

1. In **System Tray** select »proXSign« icon; the dialog window with all your personal digital certificates appears.
2. Click on »**Settings**«.
3. Choose option »**Autoupdate**«.

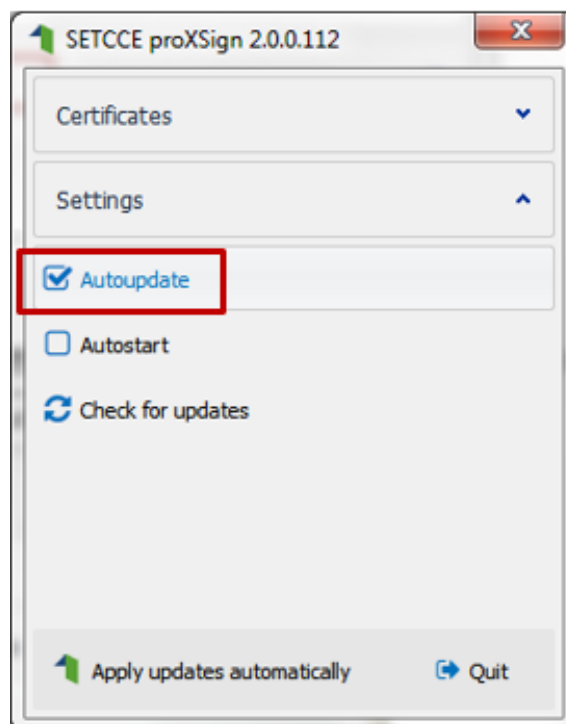


Figure 7: »Autoupdate« option

Option »Autoupdate« is disabled by default.

4.3. Check for updates

By clicking on button »**Check for updates**«, you can check if new release of SETCCE proXSign® component is available.

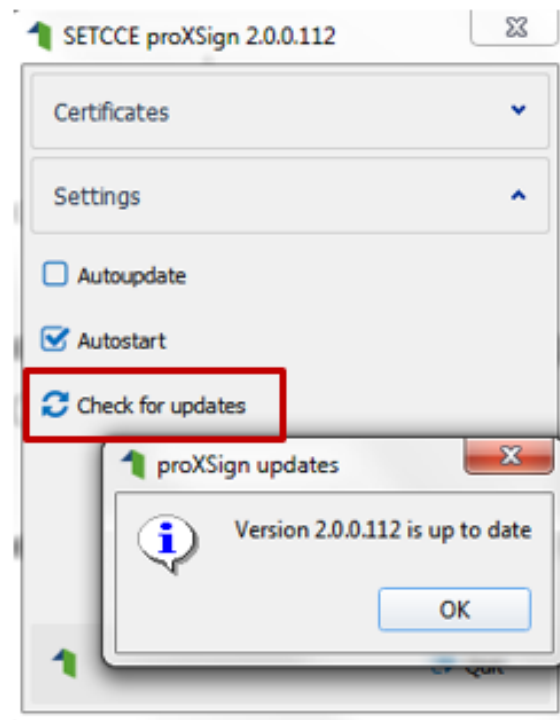


Figure 8: Option »Check for updates«

5. QUIT AND RESTART SETCCE PROXSIGN® COMPONENT

5.1. Start SETCCE proXSign® component

The component itself can be started in three different ways – depending which option is chosen during the installation process:

1. The component is already running (if you are logged in as administrator and the component was installed with option »Launch proXSign«). In this case check the System Tray for proXSign icon.

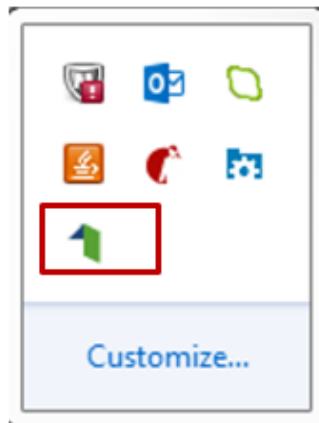



Figure 9: proXSign icon in System Tray

2. From »Start«  menu: you can choose **proXSign** from the list or type **proXSign** in the search box.

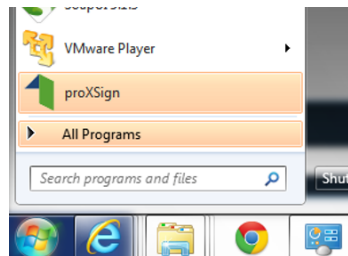



Figure 10: Run proXSign from Start menu

3. By clicking on desktop icon  (if the option »Create a desktop icon« was chosen during the installation process).

5.2. Autostart SETCCE proXSign® component

The SETCCE proXSign® component supports autostart functionality. If »Autostart« option is configured, the component is run when you log-in.

Configure »Autostart«:

1. In the **System Tray**, click on »proXSign« icon; the dialog window with all your personal digital certificates is shown to you.
2. Click on »**Settings**«.
3. Choose option »**Autostart**«.

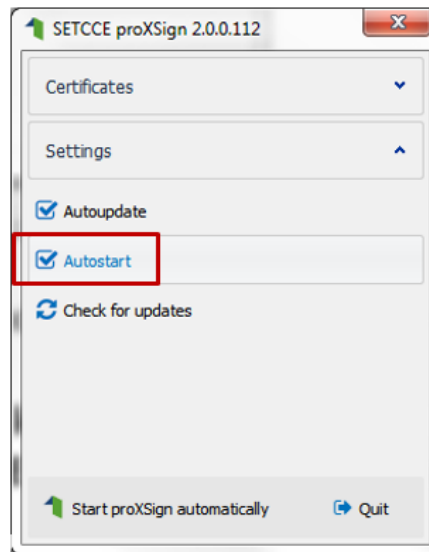
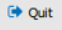


Figure 11: Option »Autostart«


Option »Autostart« is enabled by default.

5.3. Quit (Stop) SETCCE proXSign® component

We suggest to run proXSign component as a background process. In this case, the component itself does not perform any activity except if it is configured to perform »autoupgrade«. If »autoupgrade« option is configured, the component periodically checks (every 3 hours) if there is a new release available.

- If you want to stop the proXSign component (kill the process) click on »**Quit**«  button.

See Chapter 5.1 for restart.

- If you want to hide or minimize the SETCCE proXSign user interface, then click on . In this case, the SETCCE proXSign component is still running in the background and the proXSign icon is placed in the System Tray.

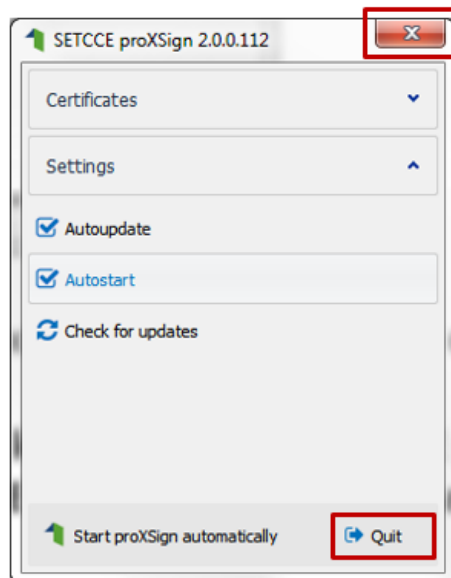


Figure 12: Options »Quit« and »Close«

6. REMOVING SETCCE PROXSIGN® COMPONENT

To be able to remove SETCCE proXSign® component from your computer you have to log in as administrator.

Steps for removing component:

1. Open »Control Panel« from the Start menu and choose »Programs and Features«.
2. Choose SETCCE proXSign® component from the list.
3. Right click on it and »Uninstall«.

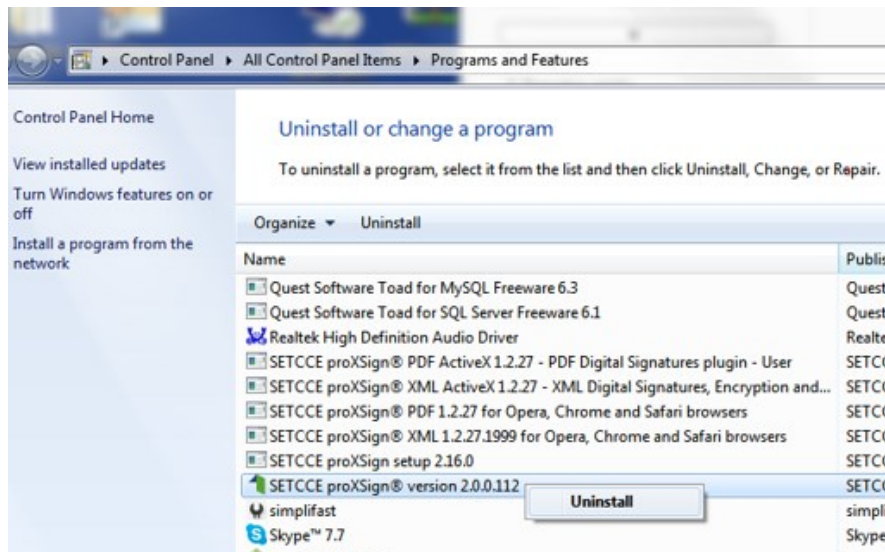


Figure 13: Uninstall proXSign from your computer

The SETCCE proXSign® component is removed from your computer. »SETCCE proXSign intermediate CA«.

7. INSTALLING A DIGITAL CERTIFICATE

7.1. Is your personal digital certificate installed on your computer?

In order to use SETCCE proXSign® component on your computer, your personal digital certificate has to be installed in Windows digital certificate store or on smart card.

Steps to install your personal digital certificate in Windows store by **Internet Explorer, Edge, Chrome, Opera, Safari** on Windows OS are as follows:

1. Save your personal digital certificate on your computer.
2. Double click on your digital certificate and follow the instructions.

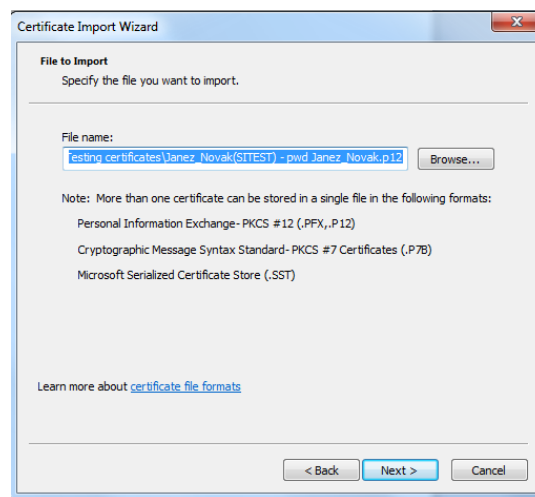


Figure 14: Installing your personal digital certificate

3. Then click »Import« and select your certificate. Enter the password in the dialog window and click »OK«.

7.2. Is your root certificate installed on your computer?

In order to use SETCCE proXSign® component, you have to install root certificate of Certification Authority which has issued your personal digital certificate.